

Stable Changing Fluid Shear Stress Promotes Osteogenesis

Linyuan Wang¹
Fang Xiao¹
Lei Yu¹
Hang Su¹
Yueqin Yang¹
Song Wang^{1*}

¹Wuhan Sports University, Hubei, China

Abstract

Objective: Bone marrow cells encounter various chemical and mechanical stimuli from the internal environment. In vivo, fluid shear stress (FSS) is one of the primary mechanical stimuli that affect bone marrow-derived mesenchymal stem cells (BMCs) activity. Since various cases of FSS influence BMCs activity differently, the purpose of this study is to determine how BMC activity in osteogenesis and osteoclastogenesis is affected by stable and unstable changing FSS.

Method: BMCs samples from the femur of the mouse, divided in to three groups: stimulate by stable changing FSS, unstable changing FSS, and no FSS. RT-PCR would be applied to detect OPG, RANKL, ALP, OCN, RUNX2, and RANK of all the samples at the 3rd day. Alizarin red staining and TRAP staining would be applied to test all the samples at the 6th day.

Results: The S group samples showed the lowest level in RANKL mRNA and showed the highest level in OPG mRNA. RANKL/OPG mRNA in the S group was the smallest during three groups. Comparing with the C group samples, RUNX2 mRNA in the S group was increased significantly. RANK mRNA in the C group was three times more than S group. S group had the largest area of mineralized nodules, and largest number of area $\geq 100\mu\text{m}$, $\geq 500\mu\text{m}^2$ or $\geq 1000\mu\text{m}^2$. The area of positive TRAP stain in S group was the smallest among three groups.

Conclusion: Stable changing FSS significantly increases osteogenesis relating to OPG-RANKL-RANK pathway. Compared with unstable changing FSS, stable changing FSS afford a more appropriate stimulation to osteogenesis.

Keywords: Fluid Shear Stress, Bone marrow cells, Osteoblasts, Osteogenesis, OPG-RANKL-RANK.

Abbreviations and Acronyms

Alkaline phosphatase=ALP, Bone marrow-derived mesenchymal stem cells=BMCs, Connexin 43 = Cx43, Complement Component 3a=C3a, c-Jun N-terminal kinase=JNK, Extracellular regulated protein kinases=ERK, Extracellular-signal-regulated kinase = ERK5, Fluid shear stress = FSS, First apoptosis signal Ligand=FasL, Glycogen synthase kinase 3β =GSK3 β , Lysophosphatidic acid=LPA, Mesenchymal stem cells = MSCs, Macrophage colony-stimulating factor =M-CSF, Monocyte chemoattractant protein-1=MCP-1, Receptor Activator of Nuclear Factor κ B=RANK, Receptor activator of nuclear factor κ B ligand = RANKL, Runt-related transcription factor 2= RUNX2, Receptor of P2Y₂=P2Y₂R,

Article Information

Article Type: Research

Article Number: JAMBR110

Received Date: 03 September, 2018

Accepted Date: 10 September, 2018

Published Date: 17 September, 2018

***Corresponding author:** Dr. Song Wang, Exercise Intervention and Health Promotion Hubei Province Synergy Innovation Center, Wuhan Sports University, 461 Luoyu Road, Wuhan, Hubei, China. Tel: +027-87190331, Email: [wangsong\(at\)whsu.edu.cn](mailto:wangsong(at)whsu.edu.cn)

[#]These Authors are Joint First Authors on this Work.

Citation: Wang L, Xiao F, Yu L, Su H, Yang Y, et al. (2018) Stable Changing Fluid Shear Stress Promotes Osteogenesis. J Appl Microb Res Vol: 1, Issu: 2 (09-16).

Copyright: © 2018 Wang L, et al. This is an open-access article distributed under the terms of the Creative Commons Attribution License, which permits unrestricted use, distribution, and reproduction in any medium, provided the original author and source are credited.

Repeat-containing G-protein-coupled receptor 4=LGR, Semaphorins=Sema, Tartrate-Resistant Acid Phosphatase=TRAP, Transient receptor potential cation channel subfamily M member 7 =TRPM7, Tumornecrosisfactorreceptor associatedfactors=TRAFs, Osteoprotegerin = OPG, Osteocalcin=OCN, Osteopontin=OPN.

Introduction

Bone marrow-derived mesenchymal stem cells (BMCs) have been attracted considerable attention because of their multiple differentiation potential [1]. At bone tissue, osteoclasts and osteoblasts are the bone resorbing cells and bone forming cells respectively. They work with each other during the process of bone remodeling. Osteoclasts differentiate from mononuclear cells of the monocyte/macrophage lineage. Osteoblasts are derived from mesenchymal stem cells (MSC). Also, their differentiation and maturity are influenced by bone marrow environment. In vivo, bone cells encounter different stimuli including chemical and mechanical ways [2]. The primary mechanical stimulation is fluid shear stress (FSS) [3].

Research had found connection between FSS and osteogenesis or osteoclastogenesis. P2Y2R [4], TRPM7 [5], Cx43 [6] and Megakaryocytes [7] as mechanosensitive factors receive shear stress stimuli and then modulate osteogenesis. Osteoblast and osteoclast differentiation can be promoted from shear stress through the ERK5 pathway [8-10]. MLO-Y4 osteocyte-like cells were exposed to fluid flow shear stress in different period. OPG mRNA level was significantly upregulated at the first hour after FSS stimulation [11]. BMCs from 6-month-old Sprague Dawley rat's vertebrae were induced by 1,25(OH)D₃ and intervened by FSS at 30min. TRAP activity was enhanced, and bone resorption area was increased [12]. Chenglin Liu et al. found that fluid flow induces calcium respond increasing in osteoclast [13].

Bone is a porous tissue. Mechanical loading lead to deformation, strain gradient and local pressure in bone tissue. It can drive the interstitial fluid flow and then causes FSS on bone marrow cells [14]. In vivo, FSS varies between 8-30 dyn/cm² according to different physical activities [15]. Bone was compressed 2000 or 3000 micro-strain *in-vivo* [16]. Verbruggen SW et al. predicted that average interstitial fluid velocities is 60.5μ m/s and average maximum shear stresses was 11 Pa surrounding osteocytes *in-vivo* [3].

A suitable device to mimic the real internal environment in bone tissue is crucial for researching the specific mechanism between FSS and osteogenesis. In our studie, we used an oscillating like "see-saw" system that based on Xiaozhou Zhou et al. mode [17] I to imitate FSS acting on BMCs in vivo. Compared with other FSS systems, this one was easier, cheaper and more convenient. There were two different FSS cases in our device. FSS can be divided into stable changing FSS and unstable changing FSS.

In this experiment, we supply two different FSS cases to BMCs and measured the marker factors of osteogenesis or osteoclastogenesis to analysis the influence on FSS to BMCs.

Materials and Methods

Cell culture

Four weeks old male Kunming mice were sacrificed by breaking neck and the femurs were removed from the body. Specimens were taken off soft tissues and then rinsed in PBS. BMCs were harvested by injecting the marrow cavity of bones with complete culture medium (89% DMEM+10% fetal bovine serum+1% penicillin-streptomycin) after cutting off two ends of the bones. 2×10⁶ cells/well were cultured in the standard six-well plates with 2.5ml or 3.5ml complete culture medium. The complete culture medium was changed every 3 days.

Fluid shear stress device

The culture plate was a commercial six-well plate. The bottom area of each well was 9.6 cm². And we set up 3 groups according to the different culture medium. In the C group (control group) there was 3.5ml culture medium in each well and kept horizon. In the S group and V group, there were 3.5ml and 2.5ml medium in each well respectively. When the culture plate was located on the horizontal table concentrator, the depth of culture medium was about 2.604 mm and 3.6mm respectively.

The FSS protocol was produced by the devices in our lab. The motor device was a BETS-M5 table concentrator and shook at 0.5 Hz, 2 times a day for 30 minutes. The tray of the device was 240mm×230mm and the maximum inclination angle was 12°. The culture plates were located on the two sides of the tray and parallel to the roller of tray. When the table concentrator was inclining, the culture medium in every well was flowing from one side to the other side.

RNA extractions and transcript quantification using real-time PCR

After the BMCs were treated with FSS for 3 days, all of the group cells were washed with PBS twice. Total RNA was extracted by Trizol (Invitrogen, USA), Chloroform, isopropyl alcohol and ethanol in order, and then quantified (Kaiao, China) and reversed transcribed with RevertAid™ First Strand cDNA Synthesis Kit (Fermentas, LTU). The cDNA was amplified with the incorporation of SYBR Green fluorescent nucleic acid stain (Invitrogen, USA) by Real-Time PCR machine (ABI, USA). $2^{[-\Delta\Delta\text{cycle threshold (Ct)}]}$ value was used to calculate the fold change in the expression of cytokines. $\Delta\text{Ct} = \text{Ct of cytokines} - \text{Ct of } \beta\text{-actin}$; $\Delta\Delta\text{Ct} = \Delta\text{Ct of treated groups} - \Delta\text{Ct of control group}$. Primers used in the RT-PCR for each gene were shown in Table 1.

Alizarin red staining

After the BMCs were cultured for 6 days, they were washed with the PBS twice. Ethanol was used to fix the cells and then 0.1% alizarin red S - Tris - Hcl (pH = 8.3) was used to stain the cells at 37°C for 30 minutes. Mineralized nodules were red in the microscope (Olympus, Japan). The number of mineralized nodules where the area is more than 100 μm², 500 μm² and 1000 μm² of mineralize nodules and total area of it were calculated respectively (Image-Pro Plus 6.0).

Table 1: List of the primers used for the RT-PCR.

Genes	FW	RW
B-actin	5'-TGCTGTCCCTGTATGCCTCTCTG-3'	5'-TGATGTCACGCACGATTTC-3'
RANKL	5'-TGAAACTCACAGCCCTCTCT-3'	5'-CATCGGAATACCTCTCCCAATC-3'
OPG	5'-GGCCTTCTCAGGTTTGTGTTCC-3'	5'-GCAGGTCTTCTCGTTCTCTCAATC-3'
RANK	5'-ATGGGTGATTTCTTTTGGTGG-3'	5'-GGTGTGTTGAATGGTTGTGAGGT-3'
RUNX2	5'-CAGGGACTGGGTATGGTTG-3'	5'-CGCTGAAGAGGCTTTTGAC-3'
ALP	(5'-TTTAGCGGGTTCACATACT-3'	5'-CAAAGGTGGTTGACAGGAT-3'
OCN	5'-CAAAGGTGGTTGACAGGAT-3'	5'-AGTGATGTGCAAGACTCCATCCTG-3'

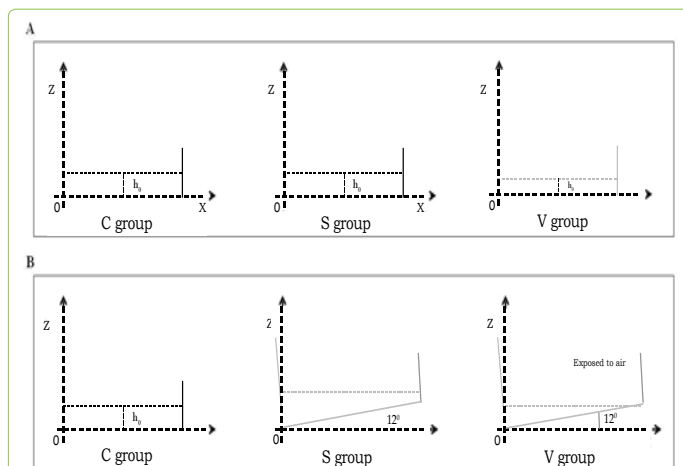


Figure 1: Set up a middle vertical cross-section at culture well. (A) The conditions of three groups when the table concentrator was in horizontal position. (B) The different conditions occur in the three groups when the table concentrator was 12° inclined.

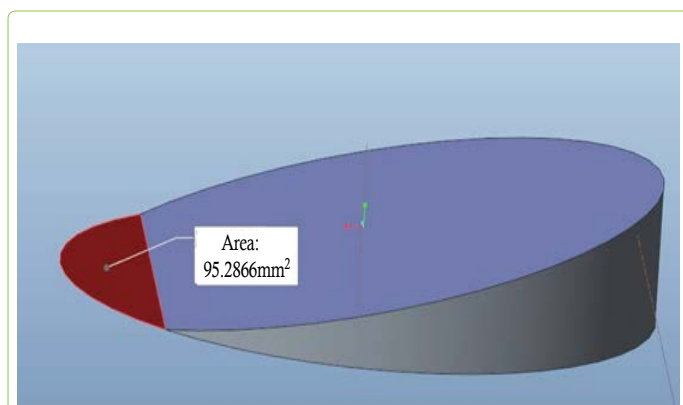


Figure 2: In the V group, an area about 95.282mm² in peripheral regions was exposed to air that was calculated using Pro-Engineer 5.0 software.

TRAP staining

After the BMCs were treated for 6 days, they were rinsed with PBS twice for 3 minutes. 2.5% glutaraldehyde was used to fix the cells and TRAP was used to stain the cells at 37°C for 50 minutes. The osteoclast cells were identified in the microscope as orange-red cells. Each sample was taken ten fields of view under microscope. The positive cell areas was calculated (Image-Pro Plus 6.0).

Statistics

The change of culture medium depth was evaluated using Pro-e 5.0 software. One-way ANOVA was used to assess differences among the groups by GraphPad Prism 5.0 software. The data was expressed as the mean ± standard deviation. Statistical significance was determined by $p < 0.05$.

Results

Changing fluid shear stress in three groups

The FSS pattern in a rocking dish was complex and spatially heterogeneous. For profiling the different conditions of the three groups, we set up a middle vertical cross-section of the culture medium in the well to quantify parameters. Cartesian coordinate system was created with X axis along dish bottom, Z axis along dish side wall, and the origin point (O) was located at the rotation center. The entire dish rotated in the vertical plane along pivotal point (O). (Figure 1).

In the C group, each well was filled with 3.5ml medium and the h_0 was 3.6mm. The culture plate were settled on horizon plane with no stimulation.

In the S group, each well was filled with 3.5ml medium and the h_0 was 3.6mm. When the table concentrator moved from horizon plane to 12°, the entire dish bottom always covered by medium. As a result, no area would be exposed during the interference process. The FSS would not be cut, and the variation will be constantly and regularly. FSS changing was more stable compared with the V group.

So, the FSS in S group was defined as stable changing.

In the V group, each well was filled 2.5ml medium and h_0 was 2.604mm. When the table concentrator moved from horizon plane to 12°, an area of about 95.28mm² at the peripheral regions were exposed to air (Figure 2). Because the oscillating was cyclical and symmetrical. There were two 10% peripheral regions of well bottom exposed. The FSS was dramatically changed at this exposing moment. So, the FSS in the V group was defined as unstable changing.

As mentioned above, the FSS was a non uniform pattern where the stress were changing all the time. It was too difficult to estimate the FSS in every point and every moment. As a result, the shear stress at the center of dish bottom when the dish was horizontal during the oscillation process was defined as characteristic FSS ($|\tau(\sim)|$). Because the FSS variation would around this value, it could be seemed as a standard to estimate FSS in S group and V group. According to the equation $|\tilde{\tau}| = \frac{\pi\mu\theta_{\max}}{2\delta^2T}$ ($\delta = h_0/L$) [17], the characteristic FSS ($|\tau(\sim)|$) in the S group was 0.62dyn/cm² and in the V group was 1.18dyn/cm². The variation of FSS at three point ($x/L=0.25, 0.5, 0.75$) in the two groups of different time was in Figure 2. The peak FSS at different point in the two groups was in Figure 3 and 4.

Expression of OPG, RANKL, ALP, OCN, RUNX2 and RANK Mrna

PCR results showed that osteogenesis in S group was prominent than other groups. Some mRNA which was associated with osteogenesis were detected on the 3rd day. RANKL mRNA expression in the S group was in a lower level compared with the C group. The OPG mRNA expression in the S group was significantly greater than the C group. Only the S group had a significant difference with the C group in RANKL/OPG mRNA expression. The change of RANKL and OPG mRNA expression in the V group was not significant. RANK was associated with osteoclastgenesis. The mRNA expression in the S group was much lower versus the C group, but its expression in the V group was not significantly different with other groups. The mRNA expression of RUNX2, OCN, ALP were shown in the diagram. Only the RUNX2 had significant differences between the S group and the C group. (Figure 5 and 6).

Mineralized nodules

Mineralized nodules represent the osteogenesis level of osteoblasts. We quantified mineralized nodules for number where the area was $\geq 100\mu\text{m}^2$, $\geq 500\mu\text{m}^2$ and $\geq 1000\mu\text{m}^2$. As well as quantified for total areas respectively. Both in the areas $\geq 1000\mu\text{m}^2$ and $\geq 500\mu\text{m}^2$, the number in the S group were much more than the other groups. In the case of $\geq 100\mu\text{m}^2$, the S group was much more than the C group, and no significant change compared with the V group. Similarly, the total area of the mineralized nodules in the S group was largest amongst the three groups. (Figure 7 and 8).

TRAP staining

Osteoclast differentiation was evaluated by the marker tartrate-resistant acid phosphatase (TRAP). TRAP is the main absorptive function protein of BMCs. The area of TRAP+ cell represents the differentiation level of osteoclasts. Comparing the TRAP+ area among the three groups, we found the areas was smallest in the S group. It indicated that stable changing FSS can inhibited osteoclastgenesis. (Figure 9 and 10)

Discussion

Bone can be defined as a homeostasis tissue that consists of osteoclast and osteoblast dynamic equilibrium. In the continuous cycle, the osteoclast is responsible for absorbing, dissolving both the inorganic and organic components of the matrix by secreting protons and collagenolytic enzymes [18]. Osteoblast is responsible for bone remodeling and formation [19,20]. Furthermore, osteoclasts interplay with osteoblasts at different differentiation stages [21].

Many studies have been focused on either promoting osteoblast activity or inhibiting bone resorption to avoid bone loss, through hormones or chemical compounds to disrupt specific parts of the remodeling cycle [22]. However, these studies overlooked the intrinsic ability of bone tissue to adapt to external stimuli from the environment. Actually, mechanical loading can help to enhance bone mass by promoting bone formation and suppressing bone resorption *in-vivo* [23]. Physiologically, shear stress can act as a mainly mechanical stimuli from blood flow and interstitial fluid to

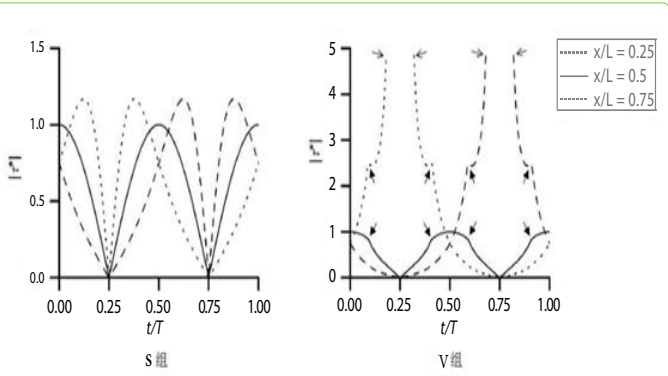


Figure 3: The variation of FSS at the three point($x/L=0.25,0.5,0.75$) in the two groups [17]. ($|\tau'$) means the ratio of FSS to characteristic FSS ($|\tau(\sim)\tau|$).

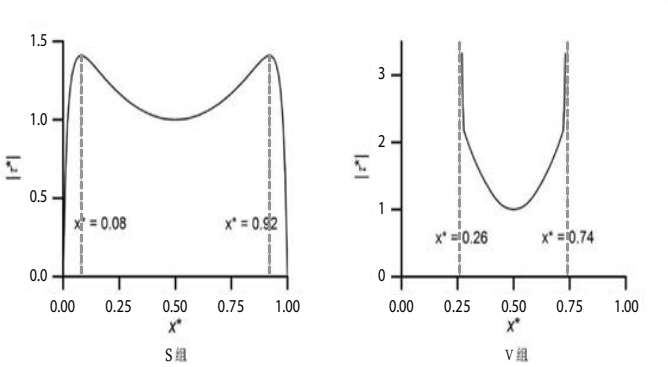


Figure 4: The peak FSS at different point in the two groups [17]. ($x^*=x/L$; $|\tau'$) means the ratio of FSS to characteristic FSS ($|\tau(\sim)\tau|$).

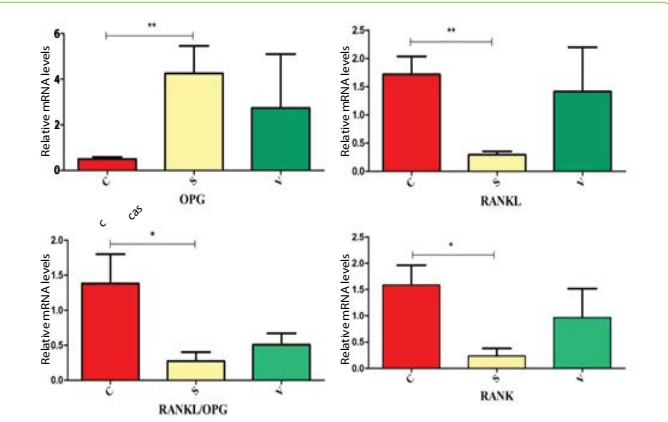


Figure 5: The relatively mRNA expression of RANKL, OPG, RANKL/OPG and RANK were showed in the diagram. * $p < 0.05$; ** $p < 0.001$

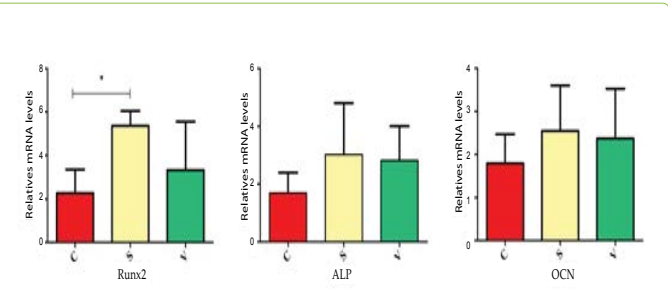


Figure 6: The relatively mRNA expression of RUNX2, OCN and ALP were showed in diagram. * $p < 0.05$.

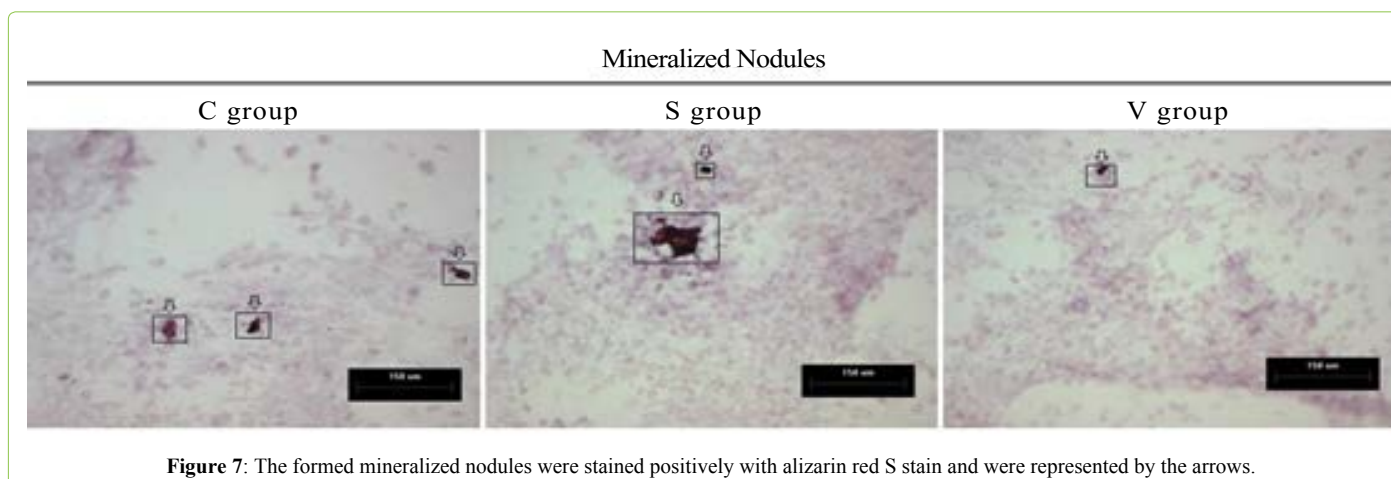


Figure 7: The formed mineralized nodules were stained positively with alizarin red S stain and were represented by the arrows.

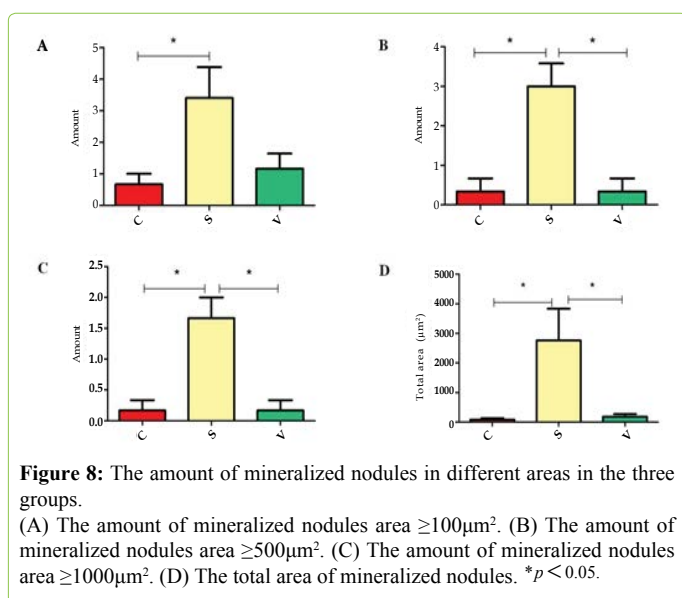
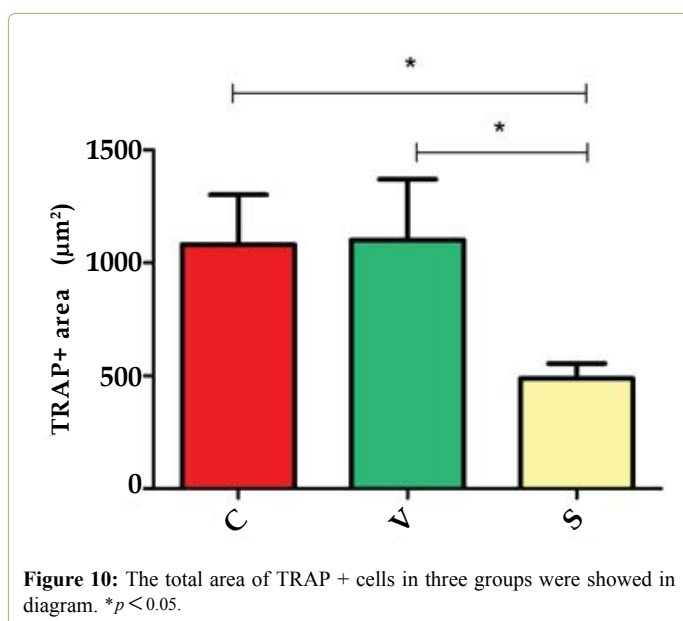
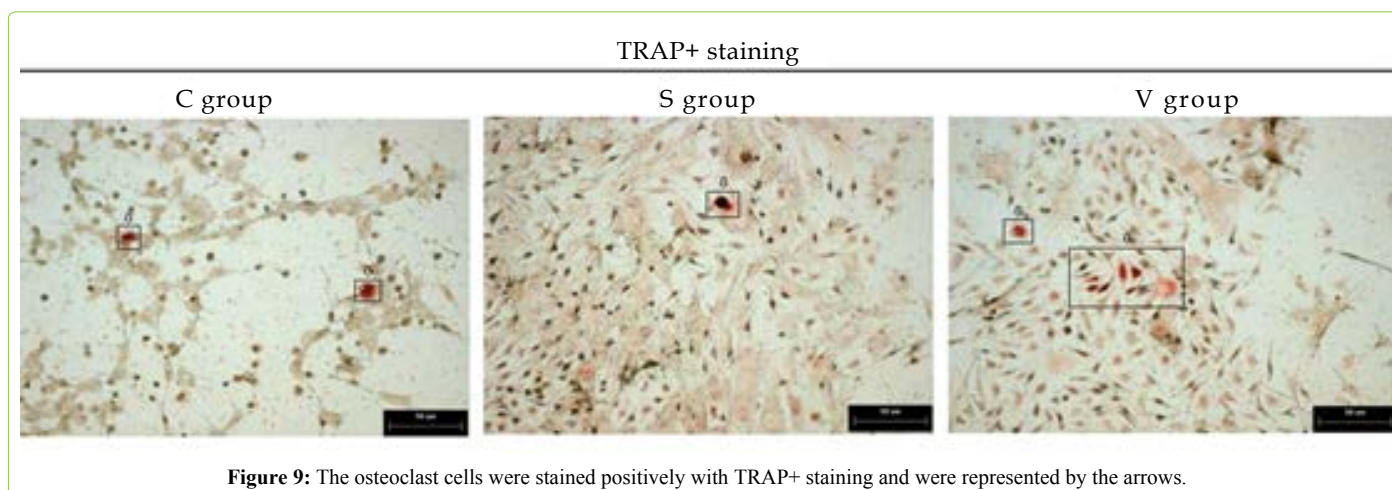


Figure 8: The amount of mineralized nodules in different areas in the three groups.

(A) The amount of mineralized nodules area $\geq 100 \mu\text{m}^2$. (B) The amount of mineralized nodules area $\geq 500 \mu\text{m}^2$. (C) The amount of mineralized nodules area $\geq 1000 \mu\text{m}^2$. (D) The total area of mineralized nodules. * $p < 0.05$.

cells [24]. Many studies have presented that adaptable FSS can improve osteogenesis, like 0.15 dyn/cm^2 [25], 12 dyn/cm^2 [26-28], 16 dyn/cm^2 [29], and $12 \times 10^{-5} \text{ N}$ [30]. Zhao, LG proved that fluid shear stress promotes ALP activity and the expression of OPN and OCN through MEK5/ERK5 pathway [31]. Besides that, primary murine osteoblasts were subjected to FSS in 5 Hz and 10 dyn/cm^2 , RANKL was induced by 2 hours post-FSS and keep elevating for at least 8 hours [32]. Although there are various studies have found the relationship between FSS and bone cells, most methods supplied a sustainable FSS to osteoblast or BMCs to study the effects in different FSS magnitude. They created a model to supply intermittent FSS to bone cells to explore the relationship between FSS and time. However, all above FSS is just keeping at a certain values, that cannot imitated the FSS in real conditions around BMCs in vivo. Actually, FSS is not constant in vivo based on different physical activities. In vivo testing of the human femur, the pressure reached 1 to 2 kPa during physiologic loading with, the higher pressure in head than neck, and it goes up with load rate [33]. Besides, the effect was decreasing over time. Cui L et. al confirmed a constantly FSS can enhance OPG mRNA expression at 12 hours, but no significant difference at 24 hours [11], indicate that cells can gradually adapt to mechanical intervention when the stimulus is constant [34].

Although osteocytes are the mainly mechanosensory cells in bone tissue, but those cells in the bone marrow are also mechanically sensitive. Soves et al. conducted a mechanical loading on mice limb in vivo and that induced the mechanical signal between bone marrow cells [7]. Li and Mantila Roosa et al. proved that mechanical loading can increase proliferation and osteogenic gene expression of marrow stromal cells [35,36]. Besides, osteoblast and osteoclast interplay with each other to keep dynamic equilibrium of bone tissue at bone marrow environment. There are at least three approaches in osteoclast-osteoblast communication. First, osteoblasts and osteoclasts can have a direct contact, allowing membrane-bound ligands and receptors to interact. Second, they form a gap junction allowing passage of small water-soluble molecules between the two cell types. Third, communication occurs to diffuse paracrine factors, such as growth factors, cytokines, chemokines and other small molecules [37]. The cell-cell communication occurred at basic multicellular unit (BMU) in bone marrow, a group of cells that achieve structural changes and skeletal renewal by the process of bone remodeling [38]. The communication occurred at every phases of bone remodeling. At initiation phase of remodeling process, hematopoietic precursors are recruited to the BMU and then differentiate into osteoclasts [39]. In this phase, OPG-RANKL-RANK axis and LGR4-RANKL-RANK axis plays an important role in regulation of osteoclastogenesis. RANKL and RANK are indispensable factor in osteoclast differentiation. OPG and LGR4 will compete with RANK to bind with RANKL. It directly influences the differentiation of hematopoietic precursors to osteoclast [37,40,41]. OPG is produced by many types of cells like osteoblast and osteocyte. In bone marrow, it has been shown that B cells are the major source of OPG in mice [42]. Besides that, M-CSF is also the key factor in osteoclast differentiation. Osteoblast can secrete M-CSF and MCP1 to keep osteoclast precursors proliferation and survive in bone marrow. In addition, Sema3A/Nrp [43] and Lysophosphatidic acid (LPA) [44] are released by osteoblast can affect osteoclast differentiation in different pathway. Subsequently, transition from bone resorption to formation by osteoblast can also be mediated by osteoclast. It directly influences the differentiation and activation of osteoblasts in resorbed lacunae to refill it with new bone. Most of these molecules are released by resorbed bone matrix or



osteoclast. Matsuoka founds that Complement Component 3a (C3a) was progressively increased during osteoclast differentiation. Its bioactive fragment 3a can stimulate the osteoblast differentiation. The C3a receptor was mainly expressed in calvarial osteoblasts [45]. Negishi-Koga et al. showed that osteoclasts can highly express Sema4D and it potently inhibits bone formation through the receptor plexin- β 1 of osteoblasts [46]. Besides, some factors also serve as a bridge for the communication. Estrogen can affect osteoclast survival through the upregulation of FasL in osteoblasts, inducing the apoptosis of osteoclasts precursors [47]. Considering the interaction between osteoclast and osteoblast in bone marrow, we thought that choosing BMCs was appropriate for studying the specific effect of FSS in bone homeostasis.

As the table concentrator tray incline from horizontal plane to maximum angle, the medium depth varied as time goes, that will led to a continuous change of during the process. It gave cells a variable mechanical stress as an intervention. Considering the different changing ways of FSS, we set two different cases in FSS. In the first case (S group), there were enough medium in the well. The entire dish bottom could be covered by medium in whole oscillating process. In the

other case (V group), there were not enough medium in the well. With the angle of culture plate reached 12° , medium would flow to one side. Some peripheral area in the other side would be exposed to air. When the area exposed, the FSS dramatically changed. Xiaozhou Zhou proved that if the oscillating angle is adaptable or the medium in the plate is enough, the FSS variation will be regularly [17]. Considering 3ml is a common volume of medium for standard six-well culture plate. In order to ensuring sufficient nutrients for cells growth, we set 3.5ml medium as the S group and 2.5ml medium as the V group to satisfy our research demands.

After the 3rd day of intervention, we found that the osteogenesis in S group was best of all the groups, and osteoclastogenesis was worst in the three groups. We found that the RUNX2, OPG, and RANKL/OPG in S group have significant difference with C group in our study. RANK and RANKL are mainly factors of osteoclastogenesis, their combination can promote the differentiation of osteoclast. In OPG-RANKL-RANK pathway, OPG combines with RANKL then block the combination of RANK with RANKL [48, 49] so, OPG also name as an osteoclastogenesis inhibitory factor. The increasing of OPG can lead decreasing of osteoclastogenesis directly. RUNX2 is a regulator in osteoblast differentiation, it plays a role in bone formation. All of the results indicated that stable changing of FSS improved the osteogenesis in BMCs and that can be detected on the 3rd day during FSS stimulation. All the results of osteoblast associated with mRNA expression, only ALP and OCN have no significantly difference. ALP is a bone formation markers and OCN is a factor of bone metabolism and energy metabolism, both of them are usually being found at later stage of osteoblast differentiation and functioning in osteogenesis. In our study, FSS magnitude was relatively lower, and three days was too short to detect the variation of ALP and OCN mRNA levels. On the 6th day, we use mineralization nodules as a sign to detect the degree of osteogenesis. As we predicted, the result in S group was remarkable different from C group. The above results demonstrated that stable changing FSS has a positive effect on osteoblast formation.

Beyond that, we also investigate the degree of osteoclastogenesis through detection of RANK mRNA expression level and TRAP+ stain. RANK is the major

regulator of osteoclastogenesis and the downstream of RANKL [39,50]. RANKL contact with RANK to recruit TNF receptor associated factors (TRAFs) to activate various signaling pathways to promote osteoclastogenesis. But their contact can be impaired by OPG occupying the binding site. The decreasing of RANK mRNA expression means the osteoclastogenesis are inhibited. At RANK mRNA expression level, the S group was lower than the C group. The total area of TRAP + stain in the S group was the smallest among three groups, it proved that stable changing FSS also can inhibit osteoclastogenesis through decrease RANK mRNA expression. Besides, most of these detection results of the V group has no difference with the control group. However, we still noticed the small change of V group. Ban Y proved that compared with intermittent flow perfusion, the continuous flow is a better environment for osteoblast activity [51]. That indicated the effect from unstable changing FSS was more weakly to stable changing FSS. In conclusion, we thought that enough volume of medium can afford a stable changing FSS, and this was an appropriate stimuli for osteogenesis in BMCs.

Conclusion

This FSS device perfectly mimicked the microenvironment *in vivo* and it has effect in osteogenesis at complex marrow cells culture system. Enough volume of culture medium produced a stable changing FSS, and it was beneficial to osteogenesis. Considering the effects of FSS on BMCs, it is meaningful to apply such FSS to osteoblast or osteoclast, and it can help to reveal the specific signal pathway from FSS to cells.

References

- Liu L, Yu B, Chen J, Tang Z, Zong C, et al. (2012) Different effects of intermittent and continuous fluid shear stresses on osteogenic differentiation of human mesenchymal stem cells. *Biomechanics and Modeling in Mechanobiology* 11: 391-401.
- Middleton K, Al-Dujaili S, Mei X, Gunther A, You L (2017) Microfluidic co-culture platform for investigating osteocyte-osteoclast signalling during fluid shear stress mechanostimulation. *Journal of Biomechanics* 59: 35-42.
- Verbruggen SW, Vaughan TJ, McNamara LM (2014) Fluid flow in the osteocyte mechanical environment: a fluid-structure interaction approach. *Biomechanics and Modeling in Mechanobiology* 13: 85-97.
- Gardinier J, Yang W, Madden GR, Kronbergs A, Gangadharan V, et al. (2014) P2Y2 receptors regulate osteoblast mechanosensitivity during fluid flow. *American journal of physiology. Cell Physiology* 306: C1058-C1067.
- Liu YS, Liu YA, Huang CJ, Yen MH, Tseng CT, et al. (2015) Mechanosensitive TRPM7 mediates shear stress and modulates osteogenic differentiation of mesenchymal stromal cells through Osterix pathway. *Scientific Reports* 5: 16522.
- Li X, Liu C, Li P, Li S, Zhao Z, et al. (2013) Connexin 43 is a potential regulator in fluid shear stress-induced signal transduction in osteocytes. *Journal of Orthopaedic Research* 31: 1959-1965.
- Soves CP, Miller JD, Begun DL, Taichman RS, Hankenson KD, et al. (2014) Megakaryocytes are mechanically responsive and influence osteoblast proliferation and differentiation. *Bone* 66: 111-120.
- Li P, Ma YC, Sheng XY, Dong HT, Han H, et al. (2012) Cyclic fluid shear stress promotes osteoblastic cells proliferation through ERK5 signaling pathway. *Molecular and Cellular Biochemistry* 364: 321-327.
- Bo Z, Bin G, Jing W, Cuifang W, Liping A, et al. (2016) Fluid shear stress promotes osteoblast proliferation via the Galphaq-ERK5 signaling pathway. *Connective Tissue Research* 57: 299-306.
- Amano S, Chang YT, Fukui Y (2015) ERK5 activation is essential for osteoclast differentiation. *PLoS one* 10: e0125054.
- Cui L, Li XT, Zhang D (2012) Effect of fluid flow-induced shear stress on osteoclast formation induced by osteocyte. *Zhongguo yi xue ke xue yuan xue bao. Acta Academiae Medicinae Sinicae* 34: 207-211.
- Liu Y, Li L, Wu J, Liao Y, Liu X, et al. (2007) Effects of fluid shear stress on bone resorption in rat osteoclasts. *Journal of Biomedical Engineering* 24: 544-548.
- Li P, Liu C, Hu M, Long M, Zhang D, et al. (2014) Fluid flow-induced calcium response in osteoclasts: signaling pathways. *Annals of Biomedical Engineering* 42: 1250-1260.
- Gurkan UA, Akkus O (2008) The mechanical environment of bone marrow: a review. *Annals of Biomedical Engineering* 36: 1978-1991.
- Weinbaum S, Cowin SC, Zeng Y (1994) A model for the excitation of osteocytes by mechanical loading-induced bone fluid shear stresses. *Journal of Biomechanics* 27: 339-360.
- Metzger TA, Kreipke TC, Vaughan TJ, McNamara LM, Niebur GL (2015) The *in-situ* mechanics of trabecular bone marrow: the potential for mechanobiological response. *Journal of Biomechanical Engineering* 137.
- Zhou X, Liu D, You L, Wang L (2010) Quantifying fluid shear stress in a rocking culture dish. *Journal of Biomechanics* 43: 1598-1602.
- Ikeda K, Takeshita S (2016) The role of osteoclast differentiation and function in skeletal homeostasis. *Journal of Biochemistry* 159: 1-8.
- Datta HK, Ng WF, Walker JA, Tuck SP, Varanasi SS (2008) The cell biology of bone metabolism. *Journal of Clinical Pathology* 61: 577-587.
- Furuya M, Ishii M (2015) [Frontiers in Live Bone Imaging Researches. *In-vivo* imaging of osteoblasts]. *Clinical Calcium* 25: 823-830.
- Abdelgawad ME, Delaisse JM, Hinge M, Jensen PR, Alnaimi RW, et al. (2016) Early reversal cells in adult human bone remodeling: osteoblastic nature, catabolic functions and interactions with osteoclasts. *Histochemistry and Cell Biology* 145: 603-615.
- Lyrithis GP, Georgoulas T, Zafeiris CP (2010) Bone anabolic versus bone anticatabolic treatment of postmenopausal osteoporosis. *Annals of the New York Academy of Sciences* 1205: 277-283.
- Thompson WR, Rubin CT, Rubin J (2012) Mechanical regulation of signaling pathways in bone. *Gene* 503: 179-193.
- Yu W, Qu H, Hu G, Zhang Q, Song K, et al. (2014) A microfluidic-based multi-shear device for investigating the effects of low fluid-induced stresses on osteoblasts. *PLoS one* 9: e89966.
- Castillo AB, Triplett JW, Pavalko FM, Turner CH (2014) Estrogen receptor-beta regulates mechanical signaling in primary osteoblasts. *American journal of physiology. Endocrinology and Metabolism* 306: E937-E944.
- Li Y, Luo Y, Huang K, Xing J, Xie Z, et al. (2013) The responses of osteoblasts to fluid shear stress depend on substrate chemistries. *Archives of Biochemistry and Biophysics* 539: 38-50.
- Li Y, Luo Y, Xie Z, Xing J, Lin M, et al. (2013) The optimal combination of substrate chemistry with physiological fluid shear stress. *Colloids and Surfaces Biointerfaces* 112: 51-60.
- Mai ZH, Peng ZL, Zhang JL, Chen L, Liang HY, et al. (2013) miRNA expression profile during fluid shear stress-induced osteogenic differentiation in MC3T3-E1 cells. *Chinese Medical Journal* 126: 1544-1550.
- Yoo YM, Kwag JH, Kim KH, Kim CH (2014) Effects of neuropeptides and mechanical loading on bone cell resorption *in-vitro*. *International Journal of Molecular Sciences* 15: 5874-5883.
- Shang S, Yin L, Sun H, Jia K (2013) Research of the synergetic action of fluid shear stress and 17-beta estradiol on the proliferation of MC3T3-E1 cells. *Journal of Stomatology* 31: 61-64.
- Grellier M, Bareille R, Bourget C, Amedee J (2009) Responsiveness of human bone marrow stromal cells to shear stress. *Journal of Tissue*

- Engineering and Regenerative Medicine 3: 302-309.
32. Mehrotra M, Saegusa M, Wadhwa S, Voznesensky O, Peterson D, et al. (2006) Fluid flow induces Rankl expression in primary murine calvarial osteoblasts. *Journal of Cellular Biochemistry* 98: 1271-1283.
33. Downey DJ, Simkin PA, Taggart R (1988) The effect of compressive loading on intraosseous pressure in the femoral head in vitro. *Journal of Bone & Joint Surgery American Volume* 70: 871-877.
34. Liu L, Yuan W, Wang J (2010) Mechanisms for osteogenic differentiation of human mesenchymal stem cells induced by fluid shear stress. *Biomechanics and Modeling in Mechanobiology* 9: 659-670.
35. Li YJ, Batra NN, You L, Meier SC, Coe IA, et al. (2004) Oscillatory fluid flow affects human marrow stromal cell proliferation and differentiation. *Journal of Orthopaedic Research* 22: 1283-1289.
36. Mantila Roosa SM, Liu Y, Turner CH (2011) Gene expression patterns in bone following mechanical loading. *Journal of bone and mineral research. American Society for Bone and Mineral Research* 26: 100-112.
37. Tamma R, Zallone A (2012) Osteoblast and osteoclast crosstalks: from OAF to Ephrin. *Inflammation & Allergy Drug Targets* 11: 196-200.
38. Sims NA, Civitelli R (2014) Cell-Cell Signaling: Broadening Our View of the Basic Multicellular Unit. *Calcified Tissue Int* 94: 2-3.
39. Xu F, Teitelbaum SL. (2013) Osteoclasts: New Insights. *Bone Research* 1: 11.
40. Chen X, Wang Z, Duan N, Zhu G, Schwarz EM, et al. (2018) Osteoblast-osteoclast interactions. *Connective tissue research* 59: 99-107.
41. Luo J, Yang ZF, Ma Y, Yue ZY, Lin HY, et al. (2016) LGR4 is a receptor for RANKL and negatively regulates osteoclast differentiation and bone resorption. *Nat Med* 22: 539-546.
42. Li Y, Toraldo G, Li A, Yang X, Zhang H, et al. (2007) B cells and T cells are critical for the preservation of bone homeostasis and attainment of peak bone mass in vivo. *Blood* 109: 3839-3848.
43. Semaphorin 3A and its role in osteoprotection (2012) *Bonekey Reports*.
44. David M, Wannecq E, Descotes F, Jansen S, Deux B, et al. (2010) Cancer cell expression of autotaxin controls bone metastasis formation in mouse through lysophosphatidic acid-dependent activation of osteoclasts. *PLoS one* 5: e9741.
45. Matsuoka K, Park KA, Ito M, Ikeda K, Takeshita S (2014) Osteoclast-derived complement component 3a stimulates osteoblast differentiation. *American Society for Bone and Mineral Research* 29: 1522-1530.
46. Negishi-Koga T, Shinohara M, Komatsu N, Bito H, Kodama T, et al. (2011) Suppression of bone formation by osteoclastic expression of semaphorin 4D. *Nat Med* 17: 1473-1480.
47. Krum SA, Miranda-Carboni GA, Hauschka PV, Carroll JS, Lane TF, et al. (2008) Estrogen protects bone by inducing Fas ligand in osteoblasts to regulate osteoclast survival. *The EMBO Journal* 27: 535-545.
48. Walsh MC, Choi Y (2014) Biology of the RANKL-RANK-OPG System in Immunity, Bone, and Beyond. *Frontiers in immunology* 5: 511.
49. Silva I, Branco JC (2011) Rank/Rankl/opg: literature review. *Acta reumatologica portuguesa* 36: 209-218.
50. Giuliani N, Colla S, Rizzoli V (2004) New insight in the mechanism of osteoclast activation and formation in multiple myeloma: focus on the receptor activator of NF-kappaB ligand (RANKL). *Experimental hematology* 32: 685-691.
51. Ban Y, Wu Y-y, Yu T, Geng N, Wang Y-y, et al. (2011) Response of osteoblasts to low fluid shear stress is time dependent. *Tissue and Cell* 43: 311-317.